

Brick-Built Roads

Build-along

Neil Snowball

Introduction

Objectives

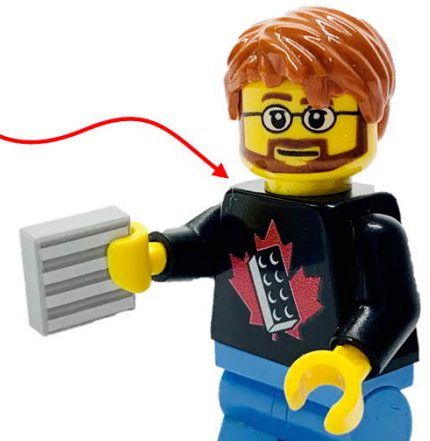


Review Brick-Built Road Options

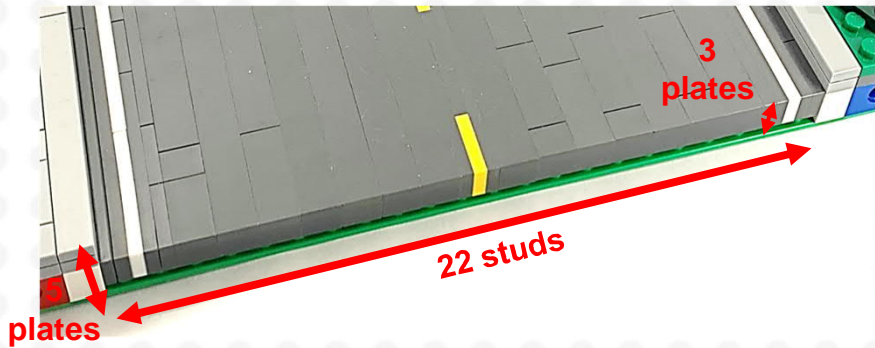
Look at the new roadplates

Build a Brick-Built Road –
Midblock Crosswalk

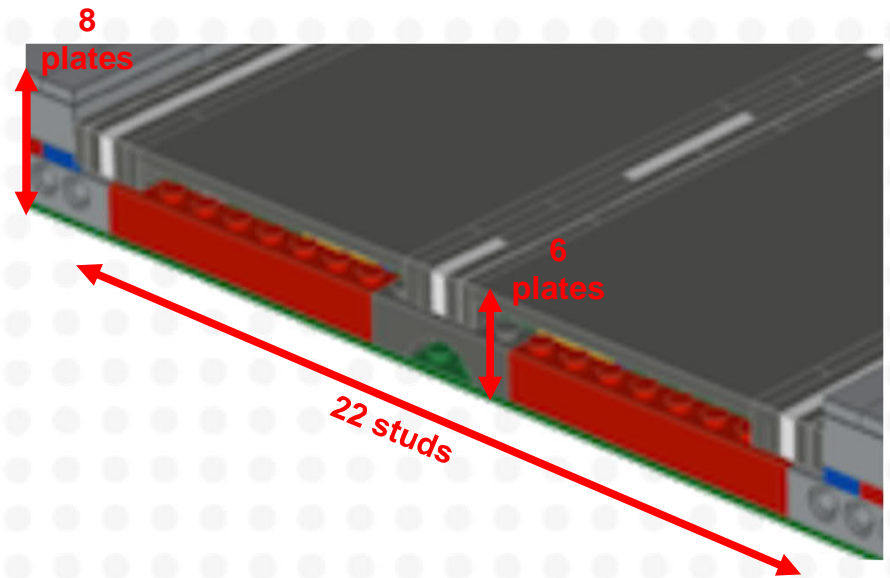
This is me!



Brick-Built Roads



VLC Brick-Built



L-Gauge MultiRoad

Brick-Built Roads - Variations

- Road Material
 - Asphalt
 - Brick style (Masonry Brick)
 - Log style (Log/Palisade Brick)
- Edges
 - Gutters
 - Edge Lines
- Sidewalks
 - Style to suit city/town

- Road Markings
 - Centrelines
 - Single line
 - Double lines
 - Dashed lines
 - Stop Bars
 - Crosswalks
 - Symbols
 - Arrows
 - Text
- Road Features
 - Manholes
 - Storm Drains
 - Potholes

This is where the versatility of Brick-Built Roads really shines - The ability to better reflect the real world

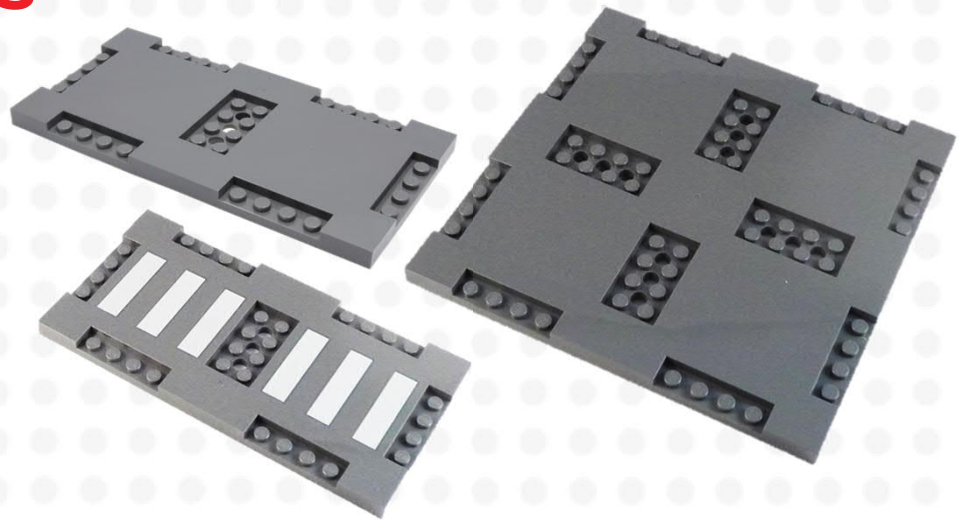
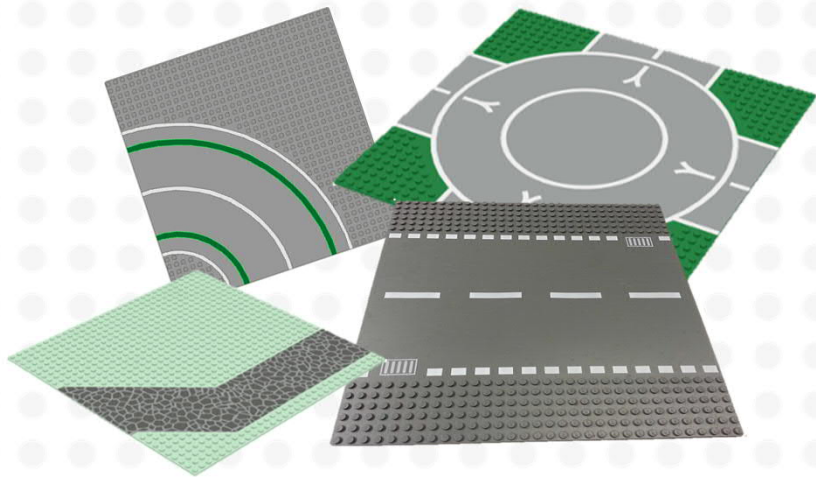
Road Plates

A Look at the new LEGO
Road Plates



- Road Baseplates phased out in 2020
- Replaced by modular road plates
- How can they work with Brick Built roads?

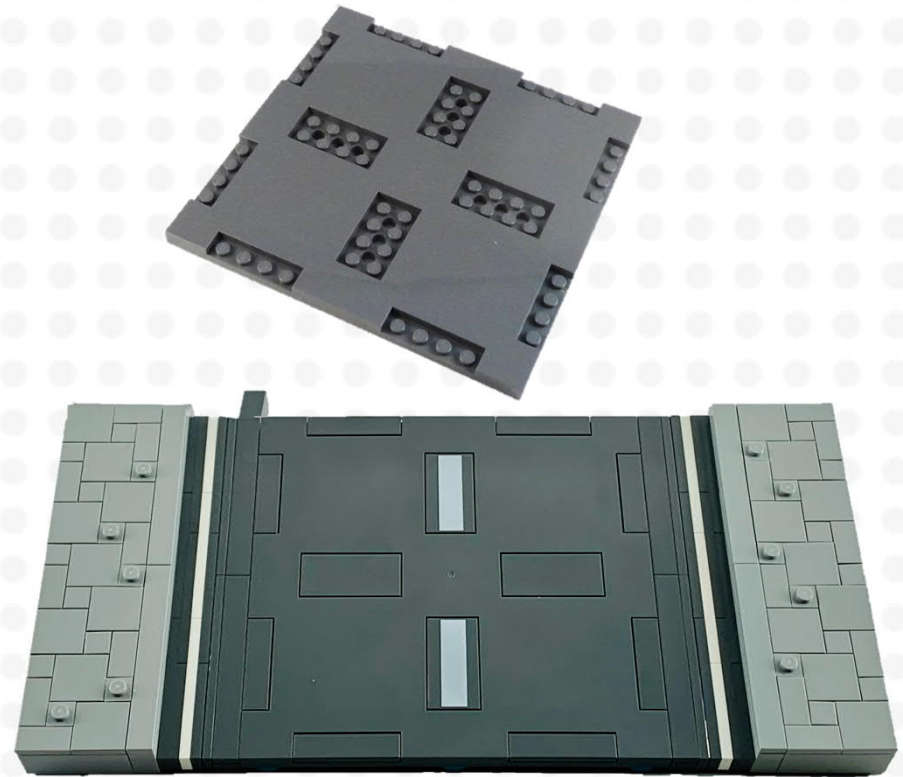
Using New Road Plates



- First introduced in 1978 (for 32 x 32 stud version)
- Many versions release over the last 40+ years
- Alternate Sizes:
 - 16 x 16 versions from 1998
 - 50 x 50 version in 1970
- Introduced in 2021
- Currently in 5 sets
- Two sizes (both 2/3 brick high)
 - 16 x 16 studs
 - 8 x 16 Studs (with/without crosswalk)

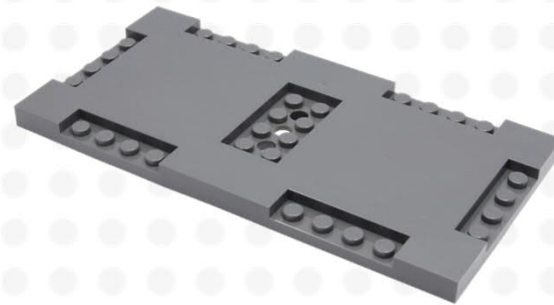
New Road Plates – 16 x 16 stud version

- 16 x 16 version
- Narrower overall roadway: 8 studs/lane
 - 4 wide vehicles - OK
 - 6 wide vehicles look a bit tight
 - 8 wide vehicles – too narrow
- does not work well in the brick built road environment
- Needs additional adjustments
 - Raise road plate by one plate
 - Additional lane width needed
- Very limited centreline options
 - Use LEGO printed tile, or not.



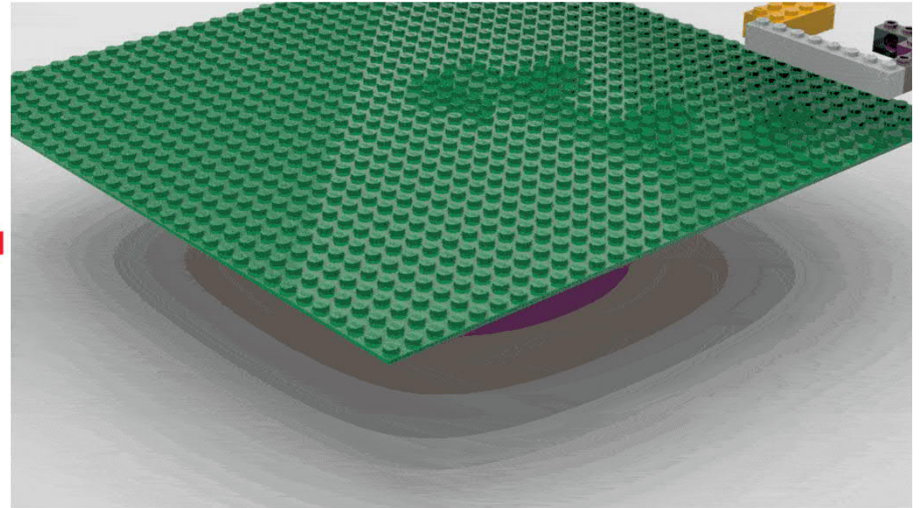
New Road Plates – 8 x 16 stud version

- 8 x 16 version
- Narrower overall roadway: 8 studs/lane
 - 4 wide vehicles - OK
 - 6 wide vehicles look a bit tight
 - 8 wide vehicles – too narrow
- Integrates better with the brick built roads
- Needs additional adjustments
 - Raise road plate by one plate
 - Additional lane width needed
- Better centreline options



**Time to get
building!**

BRICK  **CAN**

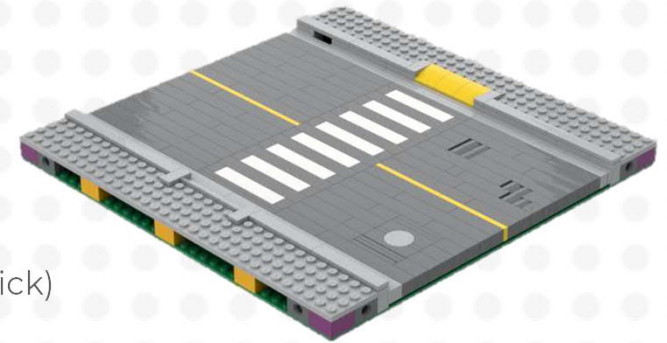


Build-Along – Midblock Crosswalk

- **Aim:**
 - Create a Brick-Built Road with a Midblock crosswalk.

- **Includes:**
 - Midblock Crosswalk
 - Letdowns
 - Storm Drain
 - Manhole
 - Potholes

- **Builder Options:**
 - Road Style:
 - Asphalt (Normal Brick)
 - Blockwork (Masonry Brick)
 - Edge Style:
 - Gutters
 - Edge Lines
 - Letdown Style:
 - Curve Slopes
 - Cheese Wedges



Now you have a Brick-Built Road!



- Keep building throughout the weekend.
- Add features to your road to personalize it.
- Let's see your builds during MOC Show and Tell sessions, and the Afterparty.

Other Information:

- MILS:
 - www.abellon.net/MILS
 - http://l-gauge.org/wiki/index.php/Modular_Standards
- 2021 BricksLA MILS:
 - See vlc.ca
- 2021 BrickCan Brick-Built Roads:
 - See vlc.ca
- Build Instructions:
 - vlc.ca
 - BrickCan.com

